

RS232 EXTENDER



(Local)



(Remote)

(RS232-E⁺)

USER MANUAL

V1.5

Package Contents-

- RS232 Extender Local Unit
- RS232 Extender Remote Unit
- 1 user manual
- 2 power adapter DC 9V/300mA
- 1 20cm Null Modem cable (DB-9 Male to Male)

Any thing missed, please contact with your vendor.

Features

- Compatible with all RS-232 protocols.
- Full-duplex data communication.
- Sends RS-232 data at 230 kbps up to 1000M / 3300 ft.
- Pure hardware solution - real time data transfer, no software conflicts.
- No external power required.
- Transfer data or files between PCs, equipments.
- One CAT-5 cable extension.

Specifications

| Function | RS232-L ⁺ | RS232-R ⁺ |
|-----------------------|-------------------------|----------------------|
| RS232 Connector | DB-9 Female x1 | |
| RJ-45 Connector | 1 | |
| Cable Distance (Max.) | 1000M / 3300ft (UTP) | |
| Communication mode | Full-duplex data | |
| Power Supply | DC9V/300mA (Min.) spare | |
| Housing | Metal | |
| Weight | 65 g | |
| Dimensions (LxWxH) mm | 92x34x22 | |

FRONT VIEW



1. RS232 (DB-9 Female Connector)

REAR VIEW



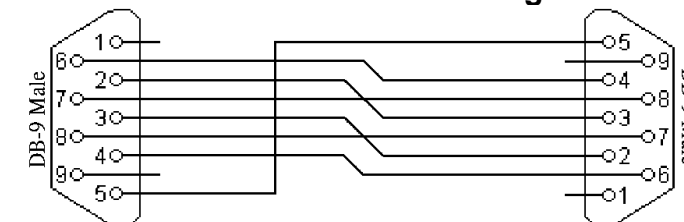
1. Power jack
2. CAT.5 (RJ-45 Connector)

Technical Specifications

Supported RS232 DCE Signals:

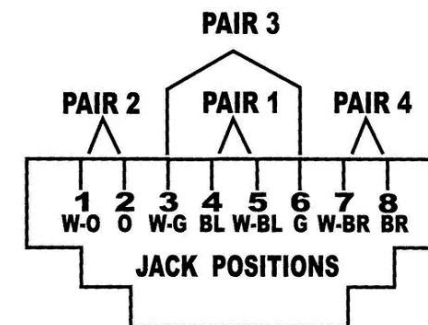
| | |
|------|-----------------|
| PIN1 | N/A |
| PIN2 | Transmit Data |
| PIN3 | Received Data |
| PIN4 | N/A |
| PIN5 | Signal Ground |
| PIN6 | N/A |
| PIN7 | Clear To Send |
| PIN8 | Request To Send |
| PIN9 | N/A |

Null modem with full handshaking:



Wiring Information & Coding:

| Conductor Identification | RJ45 Pin Assignment | Color Code for Conductor |
|--------------------------|---------------------|--------------------------|
| Pair 1 | 5 | White-Blue |
| | 4 | Blue |
| Pair 2 | 1 | White-Orange |
| | 2 | Orange |
| Pair 3 | 3 | White-Green |
| | 6 | Green |
| Pair 4 | 7 | White-Brown |
| | 8 | Brown |



Trouble shooting

Q: When RS232-E⁺ does not work smoothly.

A1: Use power adapter of DC9V 300mA.

A2: Check the two Baud Rate setting of two ends, they have to accord.

A3: Refer above sheet and check if it connect RJ45 pair are correct.

Trademarks:

All the companies, brand names, and product names referred to this manual are the trademarks or registered trademarks belonging to their respective companies.